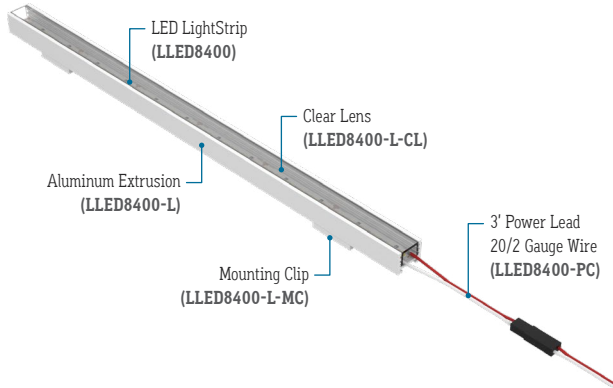


CALI

CALIFORNIA
ACCENT
LIGHTING
INC

± 0.15" Tolerance



FEATURES

APPLICATIONS	Accent, Decorative, Surface, Recessed, Pendant Lighting
LAMP TYPE	LEDs
CRI	> 85
LENS	Clear, 50% Semi-Frosted, or 100% Frosted
VIEWING ANGLE	120°
MOUNTING	Mounting Channel or Mounting Clips (Sold Separately)
WEIGHT	0.248 lbs per foot
CONSTRUCTION	Aluminum Extrusion
LENGTH	Built to Order
LISTING	Dry, Wet, or IP67 Location UL2108, CSA C22.2 #9 UL8750, CSA250
INSTALLATION	Link to Installation Instructions
ELECTRICAL	
DIMMING	0-10V
MAXIMUM RUN (Based on 5 Amps)	27' (4.3W)
MAXIMUM RUN (Based on 4 Amps for Class II)	22' (4.3W)
VOLTAGE	24VDC
DRIVER	Remote (Sold Separately)
TEMPERATURE RATINGS	Operating / Startup: -20° to 48°C (-4° to 120°F) Storage: -40° to 76°C (-40° to 170°F)

SERIES	LENS / OPTICS	WATTS PER FOOT	DIMMING	CCT LED	LISTING	FINISH	FIXTURE LENGTH
LLED8400-L	-	4.3W	-	10V-1%	-	-	-
LLED8400-L	Clear Lens (CL)	4.3 Watts (4.3W)	0-10V: 100% - 1% (10V-1%)	Dim to Warm 3000K - 1800K (DW)	Indoor (DRY)	Natural Silver* ² (NA) Polished (PA)	Specify Length in Feet & Inches Example: 7'8"
	50% Semi-Frosted Lens (SF)	To calculate Lumens per Foot, multiply Efficacy by Wattage. Example:			Outdoor* ¹ (WET)	White (WH) Satin / Silver (SA)	
	100% Frosted Lens: Line of Light (F)	4.3W x 92 Lm/W = 395 Lm/Ft			Outdoor IP67* ¹ (IP67)	Black (BK)	

*¹ Run lengths required for Wet Location & IP67 products*² Standard Finish: Natural Silver if left blank

LLED8400-L

ACCENT
& COVE

PROJECT

TYPE

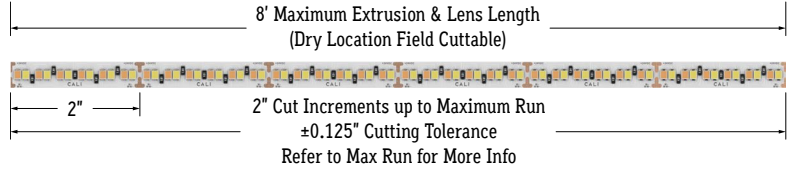


SINGLE
BIN
+/-30K



✓ TM-30
✓ LM-79
✓ LM-80

LIGHTSTRIP, EXTRUSION, & LENS



LENS



Clear Lens
Visible Diode Image (CL)



50% Semi-Frosted Lens
Slight Diode Image (SF)

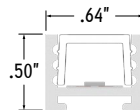


100% Frosted Lens
No Diode Image (Line of Light) (F)

LIGHT LOSS FACTORS

LENS	EFFICACY LOSS
Clear (CL)	0%
50% Semi-Frosted (SF)	12.5%
100% Frosted (F)	25%

END VIEW



Clear Lens (CL)
50% Semi-Frosted Lens (SF)
100% Frosted Lens (F)

CALIFORNIA ACCENT LIGHTING, INC.

2820 E. Gretta Lane, Anaheim, CA 92806

ph. 800.921.CALI (2254) | fx. 714.535.7902 | info@calilighting.com | calilighting.com

© CALI. All rights reserved. CALI reserves the right to make changes or withdraw specifications without prior notice.

lipLEDs™
Dim to Warm





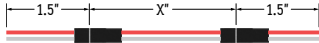
CALIFORNIA
ACCENT
LIGHTING
INC

LLED8400-L | ACCENT & COVE

ACCESSORIES (Sold Separately)

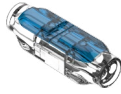


Power Connector Dry (20/2 Gauge Wire)
LLED8400-PC (33" Standard)
LLED8400-PC-X (X = Specify Length)



Continuous Connector Dry (20/2 Gauge Wire)
LLED8400-CC (3" Standard)
LLED8400-CC-X (X = Specify Length)

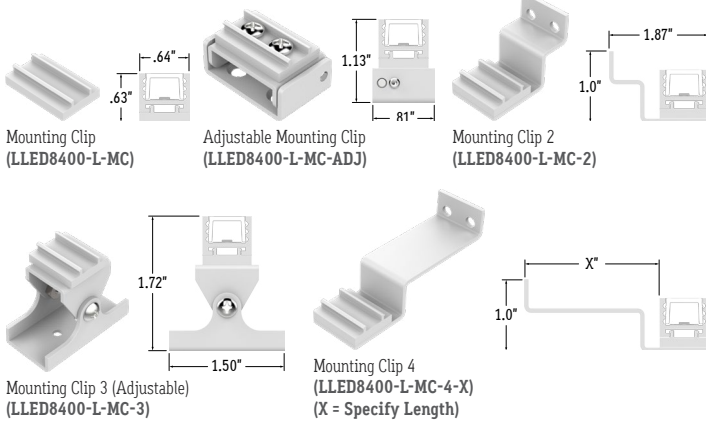
Note: Connector type subject to change without notice
Note: Connectors available with black or white jacket.
Click on image to see cut sheet for details.



Wet Splice Connector
(LLED8400-SC-WET)

MOUNTING OPTIONS (Sold Separately)

Click image to view installation information



LAMP SPECIFICATIONS

LAMP NUMBER	CORRELATED COLOR TEMPERATURE @ DIMMING %	EFFICACY (LUMENS / WATT)	L70 LED LIFE
DW	1900K @ 25%	148	60,000 hrs
	2000K @ 50%	137	
	2500K @ 75%	118	
	3000K @ 100%	92	

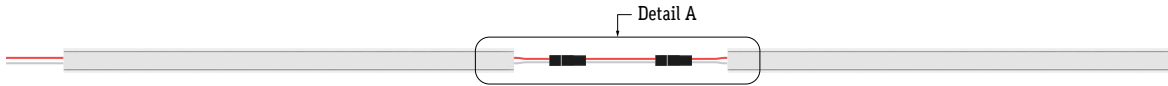
PART NUMBER	WEIGHT	SPECIFY FINISH	SPECIFY LENGTH	SPECIFY QUANTITY	UNIT
LLED8400-CC-X*	Varies by Length				Each
LLED8400-PC-X*	Varies by Length				Each
LLED8400-SC-WET	0.009 lbs each	N/A	N/A		Each
LLED8400-L-MC	0.005 lbs		N/A		Each
LLED8400-L-MC-2	0.019 lbs		N/A		Each
LLED8400-L-MC-3	0.035 lbs		N/A		Each
LLED8400-L-MC-4-X	Varies by Length				Each
LLED8400-L-MC-ADJ			N/A		Each

*Leave Finish blank for Standard option

DESIGN GUIDELINES

Individual Fixture (Up to 8')

Runs with Continuous Connector



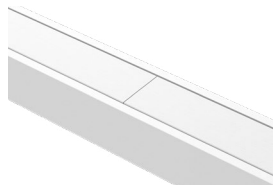
Continuous Run (Dry Location)



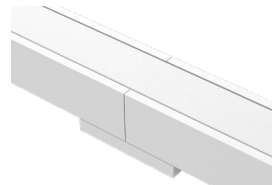
Continuous Run (Wet Location)



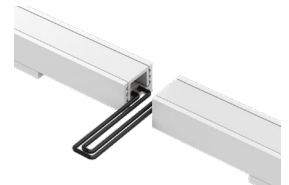
Detail A
Continuous Connector
(LLED8400-CC)



Detail B
Two Lenses Meet
(Dry Location)



Detail C
Continuous Connection
(Dry Location)



Detail D
Continuous Connection
(Wet Location)

CALIFORNIA ACCENT LIGHTING, INC.

2820 E. Gretta Lane, Anaheim, CA 92806

ph. 800.921.CALI (2254) | fx. 714.535.7902 | info@calilighting.com | calilighting.com

© CALI. All rights reserved. CALI reserves the right to make changes or withdraw specifications without prior notice.

