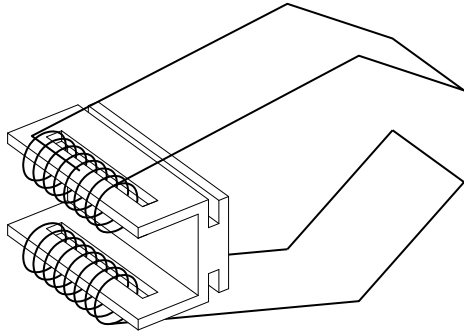
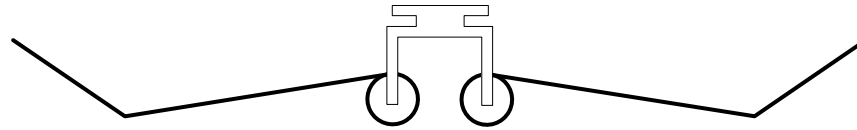


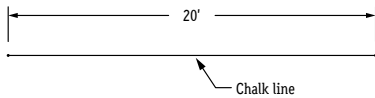
Isometric View



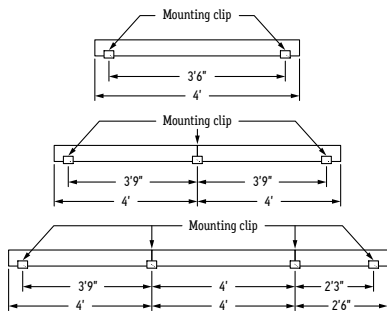
End View



1. Measure area where LLED8300-LR will be installed.
RECOMMENDATION: Use chalk line to ensure a straight installation.

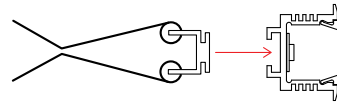


2. Mark location where mounting clips will be installed.
TIP: Quantity of mounting clips = quantity of fixture +1.
Use a mounting clip at the joint between two fixtures.

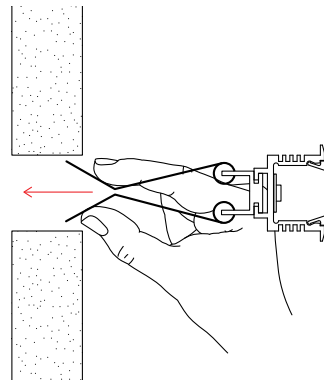


3. Apply silicone at both ends of each run to seal fixture (for wet location fixtures only).

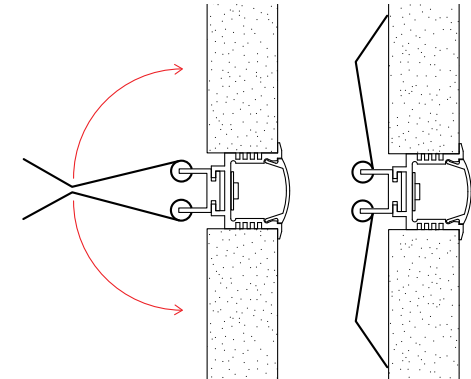
4. Slide mounting clips into channel underneath extrusion.



5. Pinch spring-loaded arms together and insert into pre-cut recess.



6. Release spring-loaded arms, allowing the spring's tension to pull extrusion into place.



Assembled End View

