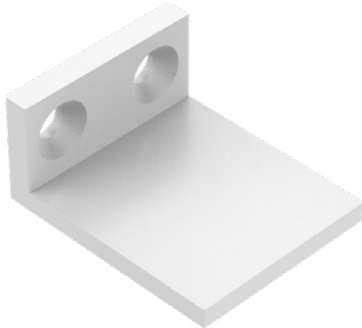
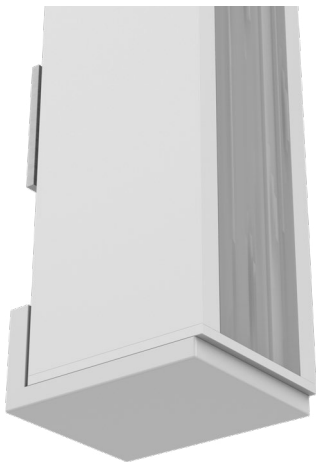


Perspective View



Assembled Detail

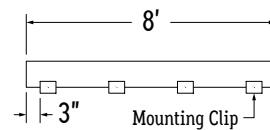


**Note:** The Vertical Stopper is to be used in conjunction with mounting clips to prevent downward sliding when luminaires are mounted vertically.

**1.** Measure area where luminaire will be installed. Use a laser line to create a reference line along installation area, ensuring consistent alignment of mounting clips. Mark location where each mounting clip and vertical stopper will be installed along reference line.

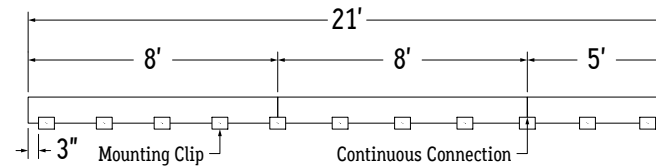
**2.** Use 1 mounting clip every 2', rounded up. Use 1 vertical stopper at the bottom of each run.  
**Note:** For vertical applications, use a stopper at the bottom to prevent fixture from sliding.

**Example 1:** Individual run of 8'.



**Example 2:** Continuous run of 21' (8' + 8' + 5').

Use a mounting clip at the joint between luminaire segments.



**3.** Lay mounting clips along reference line and pre-drill using an appropriate drill bit for surface and screw size. **Recommended:** 8/32 x 1" screw.

**Note:** Allow 0.25" clearance for lateral expansion of assembled mounting clips.  
Only install mounting clips on flat, even surfaces.

**4.** Screw mounting clips and vertical stoppers to surface, then snap luminaire into mounting clips, allowing luminaire to rest on the vertical stopper