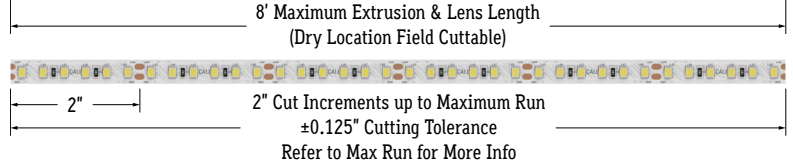


PROJECT	TYPE
SINGLE BIN +/-30K ROHS COMPLIANT DRY/WET	<input checked="" type="checkbox"/> TM-30 <input checked="" type="checkbox"/> LM-79 <input checked="" type="checkbox"/> LM-80

LIGHTSTRIP, EXTRUSION, & LENS



LENS

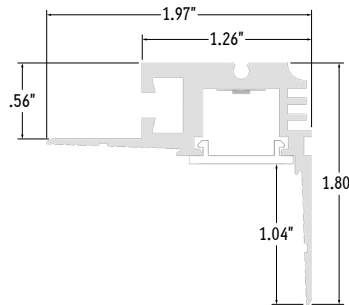
50% Semi-Frosted Lens Slight Diode Image (SF)	100% Frosted Lens No Diode Image (Line of Light) (F)

LIGHT LOSS FACTORS

LENS	EFFICACY LOSS
50% Semi-Frosted (SF)	12.5%
100% Frosted (F)	25%

Example: 3.0K CCT LED with Frosted Lens. 25% of 100 is 25. 100 - 25 = 75. The Efficacy of 3.0K CCT LED with Frosted Lens is 75.

END VIEW



50% Semi-Frosted Lens (SF)
100% Frosted Lens (F)

MOUNTING OPTIONS



FEATURES

APPLICATIONS	Mud-In, Accent, Decorative, Surface, Recessed Lighting
LAMP TYPE	LEDs
CRI	> 95
LENS	50% Semi-Frosted or 100% Frosted
VIEWING ANGLE	120°
MOUNTING	Mud-In
WEIGHT	0.59 lbs per foot
CONSTRUCTION	Aluminum Extrusion
LENGTH	Built to Order
LISTING	Dry, Damp, or Wet Location UL2108, CSA C22.2 #9 UL8750, CSA250
INSTALLATION	Link to Installation Instructions
ELECTRICAL	
DIMMING	Forward / Reverse Phase, 0-10V, Lutron, DMX, DALI
MAXIMUM RUN (Based on 4 Amps for Class II)	14' (6.5W), 17' (5.5W), 21' (4.5W), 26' (3.6W), 36' (1.5W, 2.5W)
VOLTAGE	24VDC
DRIVER	Remote (Sold Separately)
TEMPERATURE RATINGS	Operating / Startup: -20° to 48°C (-4° to 120°F) Storage: -40° to 76°C (-40° to 170°F)

SERIES	LENS	WATTS PER FOOT	DIMMING	CCT LED	LISTING	FINISH	FIXTURE LENGTH
LLED8000-EMI	-	-	-	-	-	-	-
LLED8000-EMI	50% Semi-Frosted Lens (SF)	1.5 Watts (1.5W)	Forward / Reverse Phase (PH)	2400K (2.4K)	Indoor (DRY)	Natural Silver (NA)	Specify Length in Feet & Inches Example: 7'8"
		2.5 Watts (2.5W)	0-10V: 100% - 1% (10V)	2700K (2.7K)		Polished (PA)	
	100% Frosted Lens: Line of Light (F)	3.6 Watts (3.6W)	Hi-Lume 1% 2 Wire*2 (LTEA)	3000K (3.0K)	Outdoor (DAMP)	White*1 (WH)	
		4.5 Watts (4.5W)	Hi-Lume 1% 3 Wire*3 (L3DA)	3500K (3.5K)		Satin / Silver (SA)	
		5.5 Watts (5.5W)	Hi-Lume Premier 0.1% JA8*4 (L3D0)	4000K (4.0K)		Black (BK)	
		6.5 Watts (6.5W)	JA8 0-10V (JA8-10V)	4500K (4.5K)			
		To calculate Lumens per Foot, multiply Efficacy by Wattage. Example: 2.5W x 100 Lm/W = 250 Lm/Ft	JA8 Hi-Lume 1% 2 Wire (JA8-LTEA)	Amber*7 (A)			
			DMX-512*5 (DMX)	Red*7 (R)			
			DALI*6 (DALI)	Green*7 (G)			
			Leave Blank for Non-Dimming	Blue*7 (B)			

*1 Standard Finish: White (WH) if left blank
 *2 (LTEA) 40 watt max Lutron Hi-Lume 1% 2 Wire #LTEA4U1UKL-CV240
 *3 (L3DA) 40 watt max Lutron Hi-Lume 1% 3 Wire #L3DA4U1UKL-CV240
 *4 (L3D0) 96 watt max Hi-Lume Premier 0.1% #L3D0-96W24V-U
 *5 Consult third party DMX commissioner to modify at time of installation.
 *6 DALI commissioning to be performed by a third party. CALI does not provide DALI commissioning.
 *7 Amber, Red, Green, and Blue LEDs only available in 2.5W and 5.5W
 *8 Run lengths required for Wet Location products (Specified lengths ship assembled with outdoor rated wire)

CALIFORNIA ACCENT LIGHTING, INC.

2820 E. Gretta Lane, Anaheim, CA 92806
 ph. 800.921.CALI (2254) | fx. 714.535.7902 | info@calilighting.com | calilighting.com
 © CALI. All rights reserved. CALI reserves the right to make changes or withdraw specifications without prior notice.



LAMP SPECIFICATIONS

LAMP NUMBER	CORRELATED COLOR TEMPERATURE	EFFICACY (LUMENS / WATT)	JA8	L70 LED LIFE
2.4K	2400K Incandescent White	90	Yes	60,000 hrs.
2.7K	2700K Warm White	101	Yes	60,000 hrs.
3.0K	3000K Warm White	100	Yes	60,000 hrs.
3.5K	3500K Neutral White	103	Yes	60,000 hrs.
4.0K	4000K Neutral White	105	Yes	60,000 hrs.
4.5K	4500K Neutral White	102	No	60,000 hrs.
R	Red (621nm)	70	No	40,000 hrs.
G	Green (525nm)	139	No	40,000 hrs.
B	Blue (470nm)	40	No	40,000 hrs.
A	Amber	128	No	40,000 hrs.

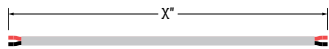
Consult factory for cooler white color temperatures.

PART NUMBER	WEIGHT	SPECIFY FINISH	SPECIFY LENGTH	SPECIFY QTY.	UNIT
LLED8000-PC-PLM-X*	Varies by Length	N/A			Each
LLED8000-SC-WET	0.009 lbs each	N/A	N/A		Each
LLED8000-EMI-ECL		N/A	N/A		Each
LLED8000-EMI-ECR		N/A	N/A		Each
LLED8000-EMI-90D-IN	0.92 lbs each		N/A		Each
LLED8000-EMI-90D-EX	0.92 lbs each		N/A		Each

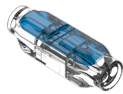
*Leave blank for Standard option.

CONNECTORS (Sold Separately)

Note: Connector type subject to change without notice. Click on image to see cut sheet for details.

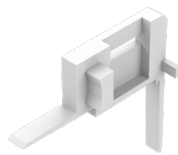


Power Connector (20/2 Gauge Plenum Rated Wire)
LLED8000-PC-PLM-X
(X = Specify Length, 36" Standard)

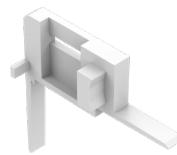


Wet Splice Connector
(LLED8000-SC-WET)

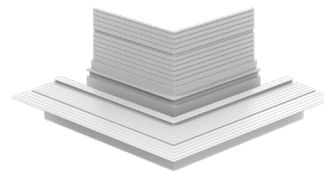
ACCESSORIES (Sold Separately)



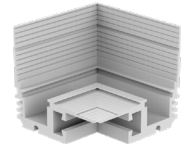
Left End Cap
(LLED8000-EMI-ECL)



Right End Cap
(LLED8000-EMI-ECR)



90° External Corner
(LLED8000-EMI-90D-EX)



90° Internal Corner
(LLED8000-EMI-90D-IN)

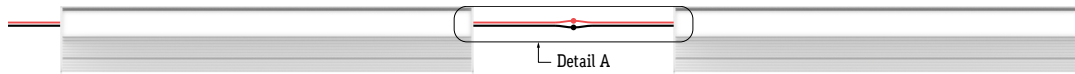
Note: Mitered Corners are used to avoid field cutting. Consult factory for other mitered angle options.

DESIGN GUIDELINES

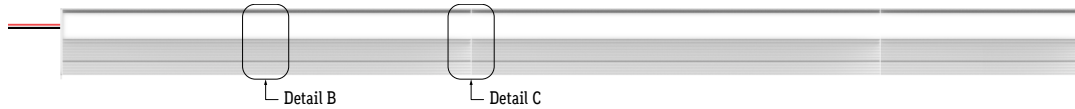
Individual Fixture (Up to 8')



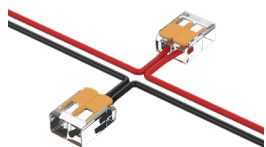
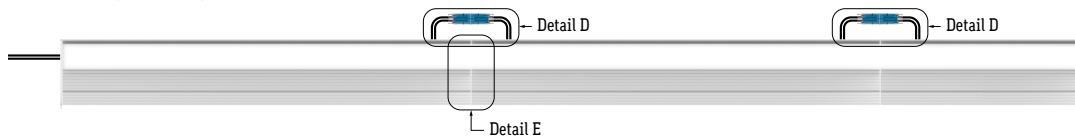
Run with Field Splice Connection (Dry or Damp Location Only)



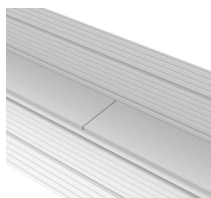
Continuous Run (Dry or Damp Location)



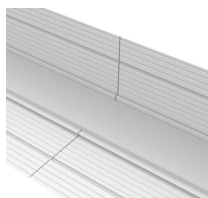
Continuous Run (Wet Location)



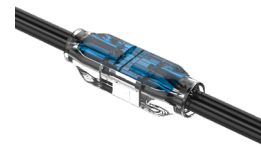
Detail A
Field Splice Connection
(Connectors by others)



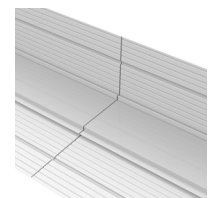
Detail B
Two Lenses Meet
(Dry or Damp Location Only)



Detail C
Two Extrusions Meet
(Dry or Damp Location Only)



Detail D
Field Splice Connection
(Wet Location Only)



Detail E
Two Fixtures Meet
(Wet Location Only)

CALIFORNIA ACCENT LIGHTING, INC.

2820 E. Gretta Lane, Anaheim, CA 92806

ph. 800.921.CALI (2254) | fx. 714.535.7902 | info@calilighting.com | calilighting.com

© CALI. All rights reserved. CALI reserves the right to make changes or withdraw specifications without prior notice.

