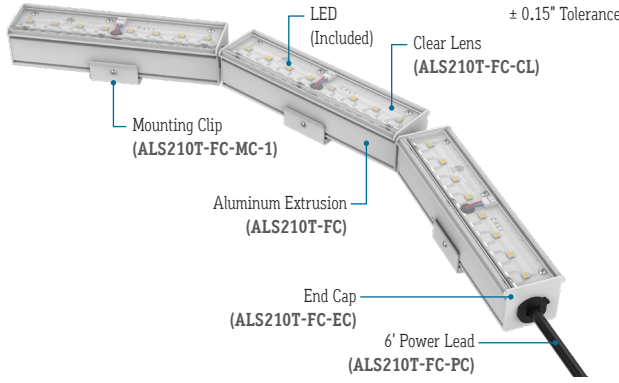




CALIFORNIA  
ACCENT  
LIGHTING  
INC

# ALS210T-FC

FIELD  
CURVABLE



## PROJECT



SINGLE  
BIN  
+30K



DRY  
IP65  
IP67

TM-30  
LM-79  
LM-80



## TYPE

## LENS



Clear Lens  
Visible Diode Image  
(CL)



50% Semi-Frosted Lens  
Slight Diode Image  
(SF)



100% Frosted Lens  
No Diode Image  
(F)



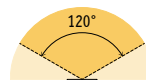
Optic or Asymmetric Lens  
Slight Diode Image  
(15D, 30D, 45D, 60D, ASM)

## LIGHT LOSS FACTORS

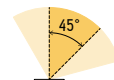
LENS / OPTIC	EFFICACY LOSS
Clear (CL)	0%
50% Semi-Frosted (SF)	12.5%
Optic (15D, 30D, 45D, 60D)	18%
100% Frosted (F)	25%

**Example:** 3.0K CCT LED with Frosted Lens. 25% of 100 is 25. 100 - 25 = 75. The Efficacy of 3.0K CCT LED with Frosted Lens is 75.

## BEAM ANGLES



120° x 120° Beam  
Clear Lens (CL)  
Semi-Frosted Lens (SF)  
Frosted Lens (F)



45° x 60° Beam  
Asymmetric Lens  
(ASM)



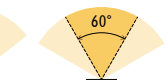
15° x 60° Beam  
Optic Lens  
(15D)



30° x 60° Beam  
Optic Lens  
(30D)

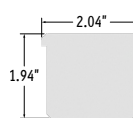


45° x 60° Beam  
Optic Lens  
(45D)

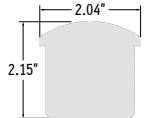


60° x 60° Beam  
Optic Lens  
(60D)

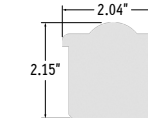
## END VIEWS



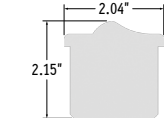
Clear Lens  
(CL)



Semi-Frosted Lens (SF)  
Frosted Lens (F)

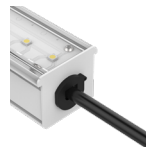


Optic Lens  
(15D, 30D, 45D, 60D)



Asymmetric Lens  
(ASM)

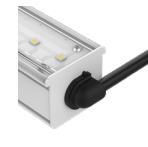
## FEED POINTS



End Feed  
(EF)



Bottom Feed  
(BF)



Side Feed  
(SF)

Add the following measurement to overall length of fixture:

- 0.15" for DRY EF cord grip
- 0.55" for DRY SF / BF cord grip
- 0.80" for WET EF cord grip
- 1.25" for WET SF / BF cord grip

## FEATURES

<b>APPLICATIONS</b>	Indirect and Direct Lighting
<b>LAMP TYPE</b>	High, Mid, or Standard Output LEDs (No Mercury)
<b>CRI</b>	>90 (High, Mid, and Standard Output)
<b>LENS</b>	Clear, Frosted, or Semi-Frosted
<b>OPTICS AND ASYMMETRIC</b>	15°, 30°, 45°, 60° or Asymmetric Optics
<b>LENGTH</b>	Built to Order (+/- 1/8" Tolerance) (1' Minimum Length, 2' Minimum Length for DMX or DALI Dimming)
<b>CONSTRUCTION</b>	Aluminum Extrusion (Shipped in 10-12" Segments)
<b>WEIGHT</b>	0.80 lbs per foot
<b>MOUNTING</b>	Mounting Clips (Sold Separately)
<b>LISTING</b>	Dry or Wet (IP65 or IP67) Location UL1598, CSA C22.2#250.0 UL8750, CSA250 UL2108, CSA C22.2 #9
<b>INSTALLATION</b>	Link to Installation Instructions
<b>ELECTRICAL</b>	
<b>DIMMING</b>	0-10V, Forward Phase, DMX, DALI
<b>MAXIMUM RUN (Line Voltage Integral Drivers)</b>	40' (1.5W, 2W, 3W, 4W, 5W, 6W, 8W) 26' (12W)
<b>MAXIMUM RUN (Class 2 Remote Drivers)</b>	36' (1.5W, 2W), 28' (3W), 21' (4W), 17' (5W), 14' (6W), 10' (8W), 7' (12W)
<b>PRIMARY VOLTAGE</b>	120V - 277V (UNV) or 120V (Phase Dimming Only)
<b>SECONDARY VOLTAGE</b>	24VDC
<b>TEMPERATURE RATINGS</b>	Operating / Startup: -20° to 48°C (-4° to 120°F) Storage: -40° to 76°C (-40° to 170°F)

SERIES	OPTICS	FINISH	CCT LED	WATTS PER FOOT	DIMMING	OUTPUT (EFFICACY)	FEED POINT	LISTING	LUMINAIRE VOLTAGE	FIXTURE LENGTH
ALS210T-FC -										
ALS210T-FC	Clear Lens* <sup>1</sup> (CL)	Natural	2400K (2.4K)	1.5 Watts (1.5W)	0-10V (10V)	High Output (HO)	End Feed (EF)	Indoor (DRY)	120V - 277V Line Voltage* <sup>4</sup> (UNV)	Specify Length in Feet & Inches Example: 7'8"
	50% Semi-Frosted Lens* <sup>1</sup> (SF)	Silver (NA)	2700K (2.7K)	2 Watts (2W)	0-10V: 100% - .1% (10V-.1%)	Mid Output (MO)	Bottom Feed (BF)	Outdoor IP65 (WET)	24V - UNV (120V - 277V)	
	100% Frosted Lens* <sup>1</sup> (F)	White (WH)	3000K (3.0K)	3 Watts (3W)	0-10V: 100% - 1% (10V-1%)	Standard Output (SO)	Side Feed (SF)	Outdoor IP67 (WET-IP67)	Remote Driver* <sup>5</sup> (24V-UNV)	
	Asymmetric Lens (ASM)	Satin (SA)	3500K (3.5K)	4 Watts (4W)	Forward Phase: 120V Line Voltage (FP)	See Next Page for Efficacies				
		Black (BK)	4000K (4.0K)	5 Watts (5W)						
		Silver (SR)	4500K (4.5K)	6 Watts (6W)	DMX-512* <sup>2</sup> (DMX)					
			5000K (5.0K)	8 Watts (8W)	DALI* <sup>3</sup> (DALI)					
			5700K (5.7K)	12 Watts (12W)	JA8 0-10V (JA8-10V)					
			Red (R)		Leave Blank for Non-Dimming					
			Green (G)							
			Blue (B)							

**Note:** Maximum length for line voltage (Integral Driver) is 320 watts per run.

**Example:** 320 watts ÷ 8 watts per foot = 40 feet max run.

\*<sup>1</sup> Clear Lens, Semi-Frosted Lens, Frosted Lens (120°)

\*<sup>2</sup> Default DMX address of each fixture is 001. Consult third party DMX commissioner to modify at time of installation. Minimum fixture length: 2'

\*<sup>3</sup> DALI commissioning to be performed by a third party at time of installation. CALI does not provide DALI commissioning. Minimum fixture length: 2'

\*<sup>4</sup> Integral drivers sized based on wattage per length.

**Example:** 10 feet x 3 watts per foot = 30 watts. Driver will be sized based on 30 watts.

\*<sup>5</sup> Remote drivers sized based on wattage per length.

**Example:** 10 feet x 3 watts per foot = 30 watts. Driver will be sized based on 30 watts.

## CALIFORNIA ACCENT LIGHTING, INC.

2820 E. Gretta Lane, Anaheim, CA 92806

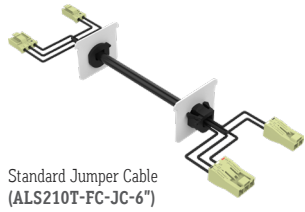
ph. 800.921.CALI (2254) | fx. 714.535.7902 | info@calilighting.com | calilighting.com

© CALI. All rights reserved. CALI reserves the right to make changes or withdraw specifications without prior notice.

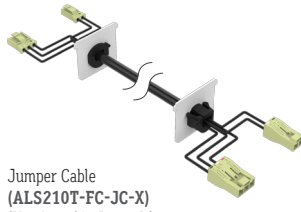
alumLEDs™  
Manufactured in the U.S.A.



**ACCESSORIES (Sold Separately)**



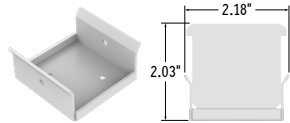
Standard Jumper Cable  
(ALS210T-FC-JC-6'')



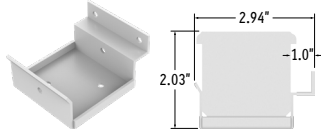
Jumper Cable  
(ALS210T-FC-JC-X)  
(X = Specify Length)

**MOUNTING OPTIONS (Sold Separately)**

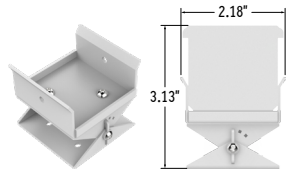
Click image to view installation information



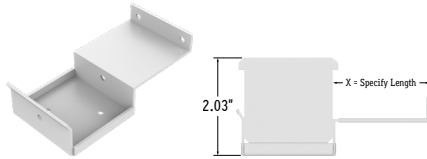
Mounting Clip 1  
(ALS210T-FC-MC-1)



Mounting Clip 2  
(ALS210T-FC-MC-2)



Mounting Clip 3 (Adjustable)  
(ALS210T-FC-MC-3)



Mounting Clip 4  
(ALS210T-FC-MC-4-X)  
(X = Specify Length, Max. 2')

**LAMP SPECIFICATIONS**

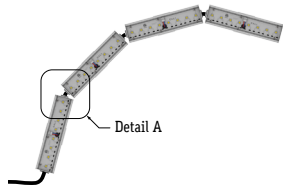
LAMP NUMBER	CORRELATED COLOR TEMPERATURE	EFFICACY (LUMENS / WATT)			JA8	L70 LED LIFE
		HIGH OUTPUT	MID OUTPUT	STANDARD OUTPUT		
2.4K	2400K Incandescent White	120	95	85	Yes	60,000 hrs.
2.7K	2700K Warm White	120	95	85	Yes	60,000 hrs.
3.0K	3000K Warm White	120	95	90	Yes	60,000 hrs.
3.5K	3500K Neutral White	120	95	90	Yes	60,000 hrs.
4.0K	4000K Neutral White	120	95	90	Yes	60,000 hrs.
4.5K	4500K Neutral White	120	95	90	No	60,000 hrs.
5.0K	5000K Cool White	130	99	95	No	60,000 hrs.
5.7K	5700K Cool White	130	99	95	No	60,000 hrs.
R	Red (621nm)	70	N/A	N/A	No	40,000 hrs.
G	Green (525nm)	139	N/A	N/A	No	40,000 hrs.
B	Blue (470nm)	40	N/A	N/A	No	40,000 hrs.

Consult factory for cooler white color temperatures.

PART NUMBER	WEIGHT	SPECIFY FINISH	SPECIFY LENGTH	SPECIFY QUANTITY	UNIT
ALS210T-FC-MC-1	0.046 lbs each		N/A		Each
ALS210T-FC-MC-2	0.061 lbs each		N/A		Each
ALS210T-FC-MC-3	0.132 lbs each		N/A		Each
ALS210T-FC-MC-4-X	Varies by Length				Each
ALS210T-FC-JC-6''	0.181 lbs each	N/A	N/A		Each
ALS210T-FC-JC-X	Varies by Length	N/A			Each

**DESIGN GUIDELINES**

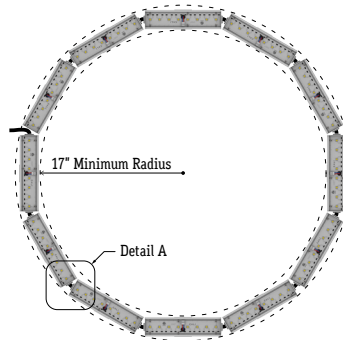
Curved Run



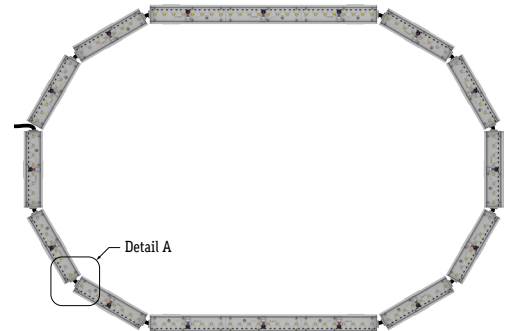
S Run



Circular Run



Combination Run (Paired with ALS210T)



Detail A  
Field Curvable Connection  
(ALS210T-FC)



Detail B  
10-12" Field Curvable Segment  
(ALS210T-FC)