

GENERAL FEATURES

APPLICATIONS	Aisle and Path Lighting
LENGTH	Built to Order ($\pm 0.25"$ Tolerance) 50' lightstrip + 8' extrusions
CONSTRUCTION	PVC Extrusion
FINISH	Matte Black
DRIVER	Remote (Sold Separately)
WEIGHT	0.34 lbs per foot
MOUNTING	Adhesive
LISTING	Dry Location Only UL2108, CSA C22.2 #9 UL8750, CSA250
TEMPERATURE RATINGS	Operating / Startup: -20° to 48°C (-4° to 120°F) Storage: -40° to 76°C (-40° to 170°F)
INSTALLATION	Link to Installation Instructions



TYPE

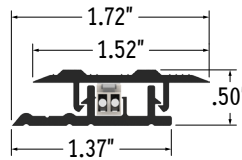
PROJECT

NOTES

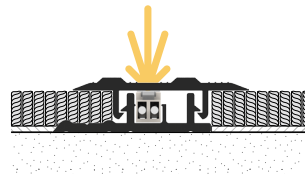
ABOUT

- Aisle and Path Lighting for carpeted areas.
- Suitable for Carpet to Carpet or Carpet to Wall applications.

END VIEW / DIMENSIONS

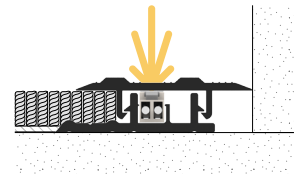


MOUNTING OPTIONS



Carpet to Carpet

Note: Do not install AisleLITE on top of carpet. Install directly onto concrete or wood floor.



Carpet to Wall

HOW TO ORDER

- 1 Generate Lightstrip product code based on specification options.
Example: AIL1700-6"-10V-30K-SLC
- 2 Specify Lightstrip run lengths.
Example: 22', 46', 30'
- 3 Specify Extrusion & Lens quantities. Extrusion & Lens are sold in 8' segments for field cutting.
Example: 22' + 46' + 30' = 98'. Order 13 Extrusion & Lens segments.
- 4 Specify Accessories. Refer to Accessories page, Installation Instructions, and Cut Sheets to determine number of Connectors, End Caps, and other accessories needed.

LAMP SPECIFICATIONS

LAMP NUMBER	CORRELATED COLOR TEMPERATURE (CCT)	DESCRIPTION	L70 LED LIFE
30K	3000K	Warm White	50,000 hrs.
50K	5000K	Cool White	
R	Red (621nm)	Red	100,000 hrs.
G	Green (525nm)	Green	
B	Blue (470nm)	Blue	
A	Amber	Amber	

LAMP FEATURES

LAMP TYPE	LEDs
LAMP WATTS	0.25W per Lamp
CRI	
EFFICACY	___ Lumens per Watt (Based on _____)

ELECTRICAL

DIMMING	0-10V, Forward / Reverse Phase, Lutron, DMX, DALI
MAXIMUM LAMPS (Class 1 Applications)	432
MAXIMUM LAMPS (Class 2 Applications)	344
LUMINAIRE VOLTAGE	120V - 277V (UNV) 120V (Lutron LTEA Only)
WIRING	Parallel
SOCKET	Custom

SPECIFY PRODUCT CODE | CHOOSE FROM DROP DOWNS

SERIES	SPACING	DIMMING	CCT LED	LENS	LUMINAIRE LENGTH
AIL1700	-	-	-	-	-
AIL1700 (AIL1700)	4" On Center: 3 LEDs per Foot / 0.75W per Foot (4")	Phase Dimming: Forward / Reverse Phase (PH)	302400K (24K) 3000K (30K)	Clear Lens (CL)	Specify Length in Feet & Inches Example: 27'8"
	6" On Center: 2 LEDs per Foot / 0.5W per Foot (6")	0-10V: 100% - 1% (10V) Hi-Lume 1% 2 Wire*2 (LTEA)	3500K (35K) 4000K (40K)	Smoke Lens (SLC)	
	8" On Center: 1.5 LEDs per Foot / 0.375W per Foot (8")	Hi-Lume 1% 3 Wire*3 (L3DA) Hi-Lume Premier 0.1% JA8*4 (L3D0)	4500K (45K) 5000K (50K)		
	12" On Center: 1 LEDs per Foot / 0.25W per Foot (12")	DMX-512*5 (DMX) DALI*6 (DALI)	Red (R) Green (G)		
	18" On Center: 0.66 LEDs per Foot / 0.165W per Foot (18")	Leave Blank for Non-Dimming	Blue (B) Amber (A)		

*1 Lumens per foot based on 3.5K CCT LED. Example: 62 Lumens x 3.3 Watts = 204 Lumens per Foot

*2 (LTEA) 40 watt max Lutron Hi-Lume 1% 2 Wire #LTEA4U1UKL-CV240

*3 (L3DA) 40 watt max Lutron Hi-Lume 1% 3 Wire #L3DA4U1UKL-CV240

*4 (L3D0) 96 watt max Hi-Lume Premier 0.1% #L3D0-96W24V-U

*5 Default DMX address of each fixture is 001. Consult third party DMX commissioner to modify at time of installation.

*6 DALI commissioning to be performed by a third party at time of installation. CALI does not provide DALI commissioning.

DIMMING SELECTION

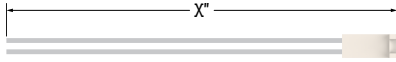
- Phase & 0-10V
- DMX-512 & DALI
- Lutron LTEA
- Lutron L3DA
- Lutron L3D0

PRODUCT CODE

- PH, 10V
- DMX, DALI
- LTEA
- L3DA
- L3D0

LINKS

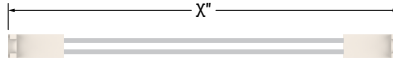
- <http://www.calilighting.com/assets/pdf/drivers/Drivers-Brochure.pdf>
- <http://www.calilighting.com/assets/pdf/drivers/DRV100-E.pdf>
- <http://www.calilighting.com/assets/pdf/LutronDrivers/Lutron-LTEA.pdf>
- <http://www.calilighting.com/assets/pdf/LutronDrivers/Lutron-L3DA.pdf>
- <http://www.calilighting.com/assets/pdf/LutronDrivers/Lutron-L3D0.pdf>



Power Connector (20/2 Gauge Wire)
(AIL1700-PC) 36" Standard
(AIL1700-PC-X) X = Specify Length

POWER CONNECTOR		
PART #	LENGTH	QTY.
AIL1700-PC	-	/

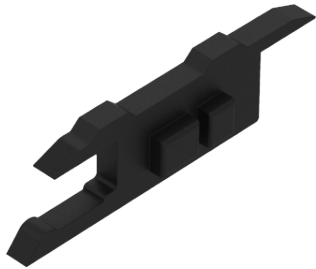
Note: Use 1 Power Connector per run.
Leave length blank for standard option (36").



Continuous Connector (20/2 Gauge Wire)
(AIL1700-CC) 3" Standard
(AIL1700-CC-X) X = Specify Length

CONTINUOUS CONNECTOR		
PART #	LENGTH	QTY.
AIL1700-CC	-	/

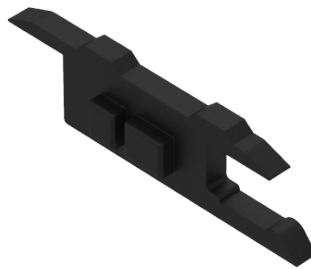
Note: Use 1 Continuous Connector for each corner or gap connection along the run.
Leave length blank for standard option (3").



Left End Cap
(AIL1700-ECL)

LEFT END CAP	
PART #	QTY.
AIL1700-ECL	/

Note: Order 1 End Cap for each instance where a run terminates on the left side of the extrusion.



Right End Cap
(AIL1700-ECR)

RIGHT END CAP	
PART #	QTY.
AIL1700-ECR	/

Note: Order 1 End Cap for each instance where a run terminates on the right side of the extrusion.

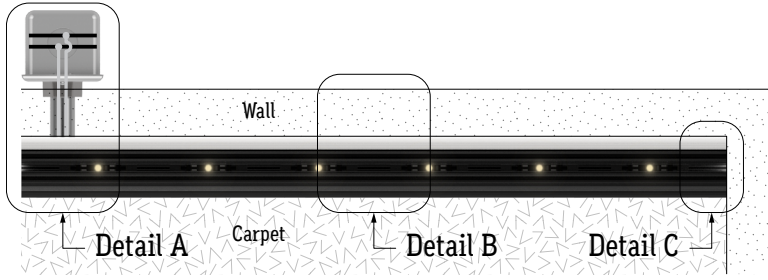


28 oz Adhesive Tube
(AIL1700-AD)

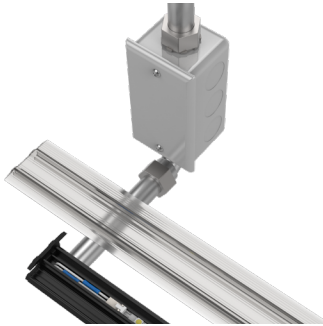
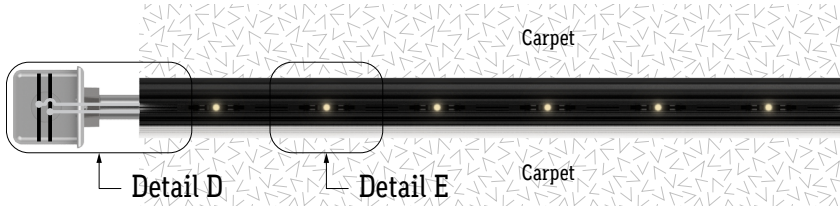
ADHESIVE TUBE	
PART #	QTY.
AIL1700-AD	/

Note: Each Adhesive Tube typically mounts 30' of extrusion.

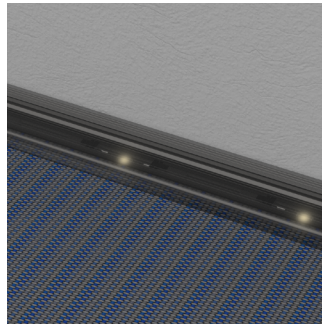
CARPET TO WALL



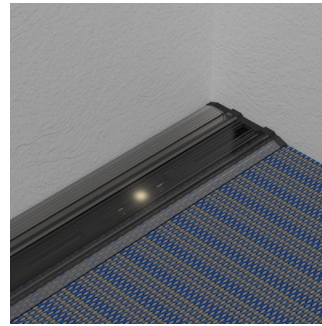
CARPET TO CARPET



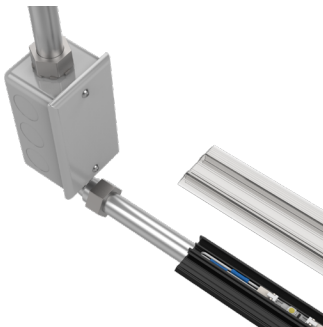
Detail A
Wiring Connection to J-Box
(J-Box by Others)



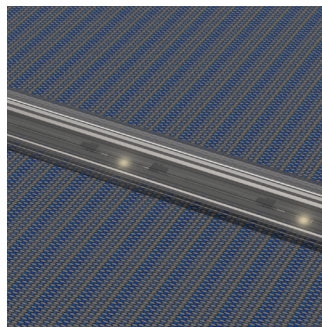
Detail B
Path Extrusion - Carpet to Wall
(AIL1700)



Detail C
Terminating End with End Cap
(AIL1700-ECR)



Detail D
Wiring Connection to J-Box
(J-Box by Others)



Detail E
Path Extrusion - Carpet to Carpet
(AIL1700)