

ALS500T-SMR PRODUCT LAUNCH OCTOBER 2020



A DIRECT VIEW SURFACE MOUNT LIGHTING SYSTEM THAT DELIVERS.

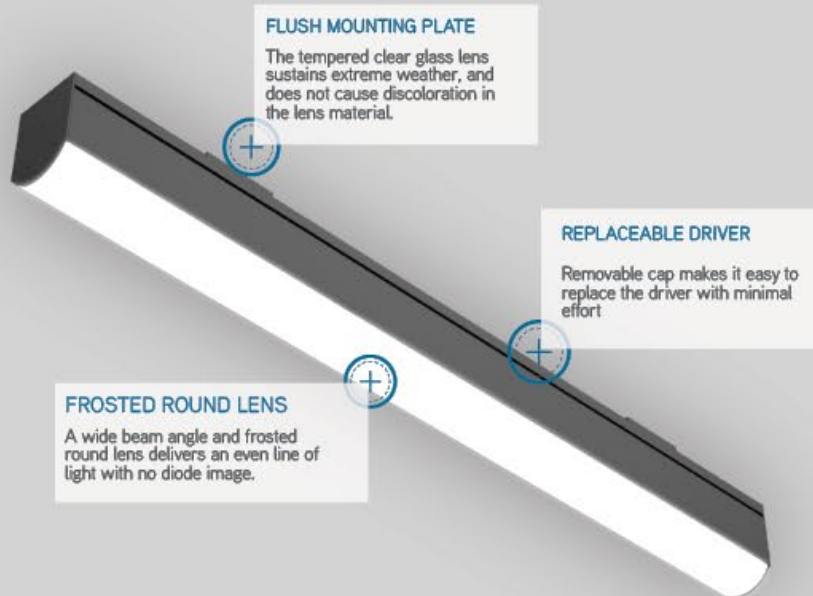


We proudly introduce ALS500T-SMR, to the alumLEDs family. ALS500T-SMR is built with a frosted lens that delivers a clean line of light and wide beam angle. Designers can choose from a variety of options such as color temperatures, watts per foot, and finish option.

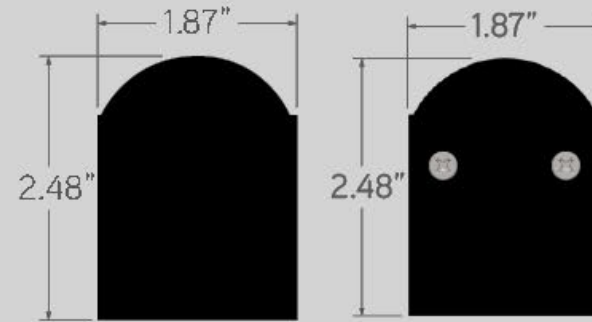
Without adoubt, ALS500T-SMR delivers a seamless line of light for your next project with factory built corners.

FEATURES

ALS500T-SMR presents discreet yet powerful features that deliver a stunning line of light in direct view surface mount applications.



DISCREET YET POWERFUL FEATURES



 DRY/DAMP LOCATION
NO SCREWS

 WET LOCATION
SCREWS

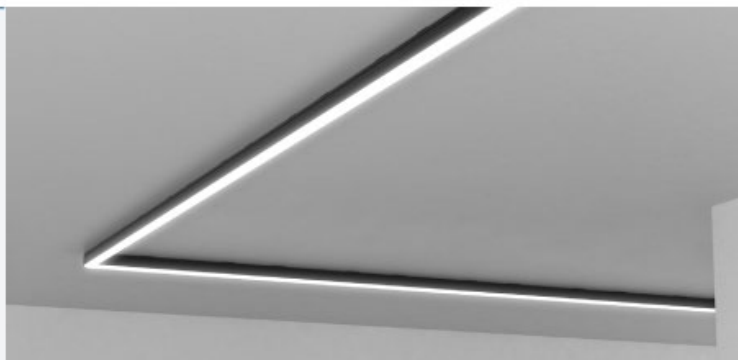
FACTORY-BUILT CORNERS



90° LINEAR CORNER

Seamless miter cut corner prevents dark spots and delivers an even line of light.

ALS500T-SMR-90D



90° INTERNAL CORNER

Thoughtfully designed to maintain a seamless line of light in a variety of design spaces.

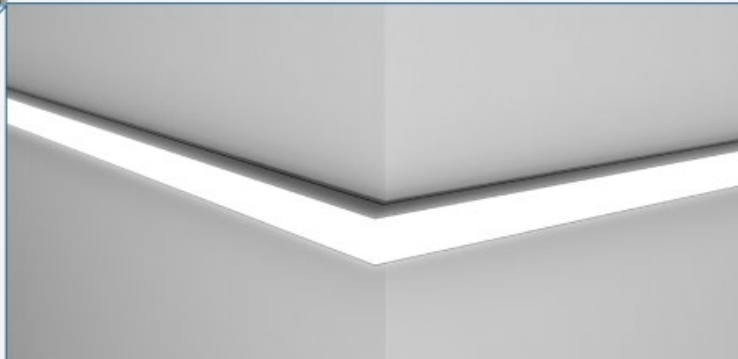
ALS500T-SMR-90D-IN



90° EXTERNAL CORNER

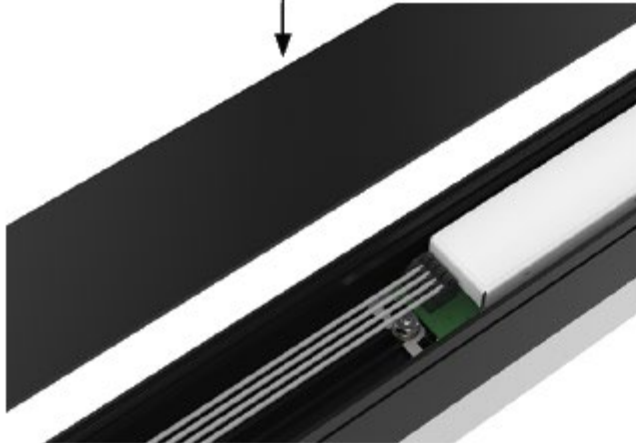
Perfectly engineered to wrap around corners while preserving an even direct view line of light.

ALS500T-SMR-90D-EX



REPLACEABLE DRIVER

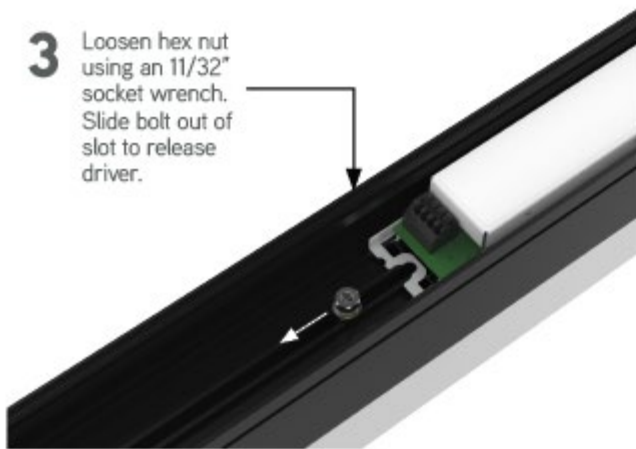
1 Remove bottom cap.



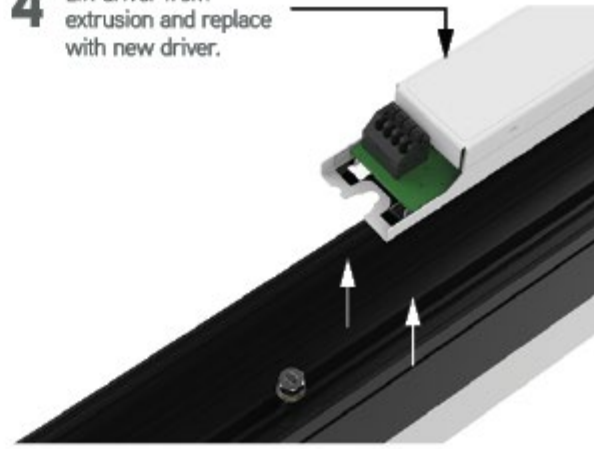
2 Push on modular connectors to disconnect driver and release wires. Do not bend wires.



3 Loosen hex nut using an 11/32" socket wrench. Slide bolt out of slot to release driver.



4 Lift driver from extrusion and replace with new driver.



CALI

CALIFORNIA ACCENT LIGHTING, INC.

2820 E. Gretta Lane Anaheim, CA 92806

ph. 800.921.CALI | fx. 714.535.7902 | info@calilighting.com | calilighting.com

© CALI. All rights reserved. CALI reserves the right to make changes or withdraw specifications without prior notice.

