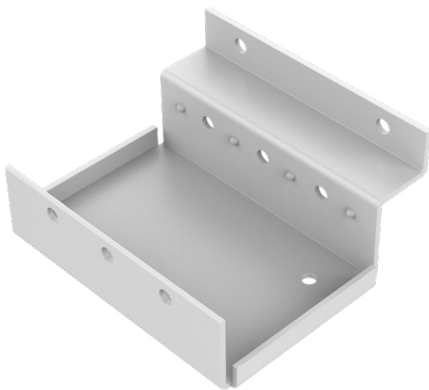
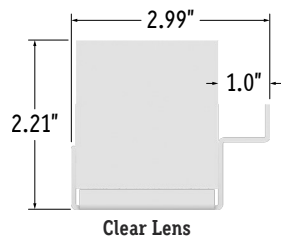


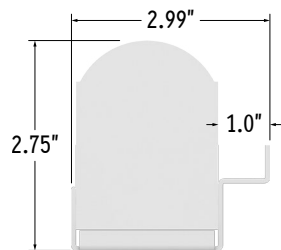
## Perspective View



## Assembled End Views



Clear Lens

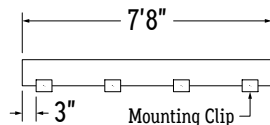


Semi-Frosted Lens  
Frosted Lens

1. Measure area where luminaire will be installed. Use a laser line to create a reference line along installation area, ensuring consistent alignment of mounting clips. Mark location where each mounting clip will be installed along reference line.

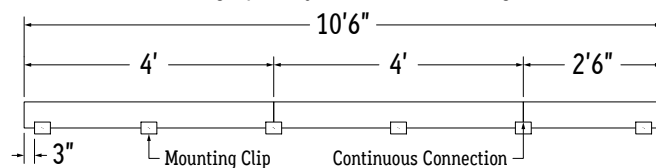
2. Use 1 mounting clip every 2', rounded up.

**Example 1:** Individual run of 7'8\".



**Example 2:** Continuous run of 10'6\" (4' + 4' + 2'6\").

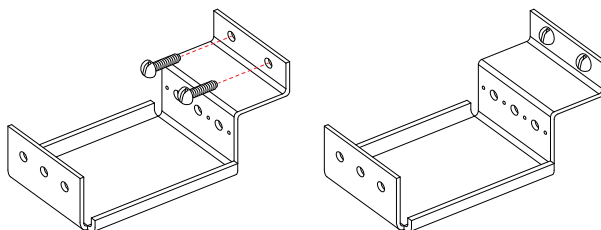
Use a mounting clip at the joint between luminaire segments.



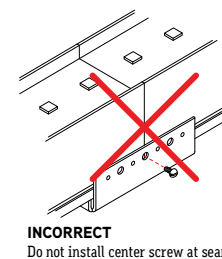
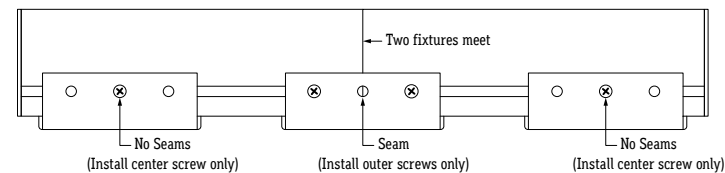
3. Lay mounting clips along reference line and pre-drill using an appropriate drill bit for surface and screw size. **Recommended:** 8/32 x 1\" screw.

**Note:** Allow 0.25\" clearance for lateral expansion of assembled mounting clips.  
Only install mounting clips on flat, even surfaces.

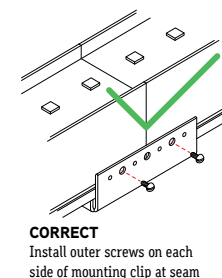
4. Screw mounting clips to surface, then snap luminaire into mounting clips.



5. Install set screws into mounting clips for outward and downward facing applications. Install set screws on each mounting clip that connects two fixtures.



**INCORRECT**  
Do not install center screw at seam



**CORRECT**  
Install outer screws on each side of mounting clip at seam