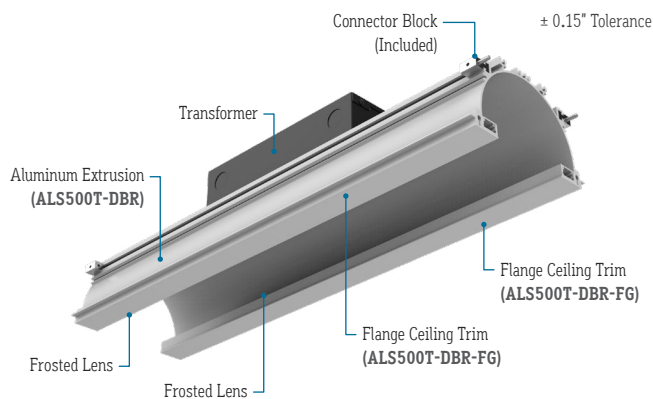




CALIFORNIA
ACCENT
LIGHTING
INC



FEATURES

APPLICATIONS	Indirect Lighting
LAMP TYPE	High Output LEDs (No Mercury)
CRI	>90
EFFICACY	71 Lumens per Watt (Based on 3.5K CCT LED)
LENS	Clear
LENGTH	Built to Order
CONSTRUCTION	Aluminum Extrusion
WEIGHT	4.80 lbs per foot
MOUNTING	Aircraft Cable
LISTING	Dry or Damp Location UL1598, CSA C22.2#250.0 UL8750, CSA250 UL2108, CSA C22.2 #9
INSTALLATION	Link to Installation Instructions
ELECTRICAL	
DIMMING	0-10V, Lutron, DMX, DALI
MAXIMUM RUN (Class 2 Applications)	21' (4W), 14' (6W), 10' (8W), 8' (10W), 7' (12W), 5' (16W), 3' (24W)
PRIMARY VOLTAGE**	120V - 277V (UNV)
SECONDARY VOLTAGE	24VDC
DRIVER	Remote
TEMPERATURE RATINGS	Operating / Startup: -20° to 48°C (-4° to 120°F) Storage: -40° to 76°C (-40° to 170°F)

ALS500T-DBR-FG

INDIRECT
LIGHTING

PROJECT

TYPE

SINGLE
BIN
+30K

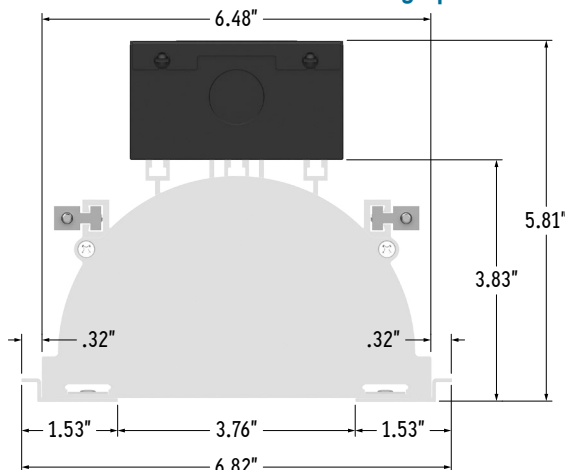
RoHS
COMPLIANT

DRY
DAMP

✓ TM-30
✓ LM-79
✓ LM-80



END VIEW (Does Not Include Mounting Options)



LAMP SPECIFICATIONS

LAMP NUMBER	CORRELATED COLOR TEMPERATURE	L70 LED LIFE
2.4K	2400K Incandescent White	60,000 hrs.
2.7K	2700K Warm White	60,000 hrs.
3.0K	3000K Warm White	60,000 hrs.
3.5K	3500K Neutral White	60,000 hrs.
4.0K	4000K Neutral White	60,000 hrs.
4.5K	4500K Neutral White	60,000 hrs.
5.0K	5000K Cool White	60,000 hrs.
5.7K	5700K Cool White	60,000 hrs.
R	Red (621nm)	40,000 hrs.
G	Green (525nm)	40,000 hrs.
B	Blue (470nm)	40,000 hrs.
A	Amber (589nm)	40,000 hrs.

SERIES / CEILING TRIM	FINISH	CCT LED	WATTS PER FOOT	DIMMING	LISTING	LUMINAIRE VOLTAGE**	FIXTURE LENGTH
ALS500T-DBR-FG	-	-	-	-	-	UNV	-
Flange Ceiling Trim (ALS500T-DBR-FG)	White (WH)	2400K (2.4K)	2 Watts x 2 = 4 Watts: 284 Lumens/ft*1 (4W)	0-10V: 100% - .1% (10V)	Indoor (DRY)	120 - 277 Volts Line Voltage*7 (UNV)	Specify Length in Feet & Inches Example: 12'7"
	Satin (SA)	2700K (2.7K)	3 Watts x 2 = 6 Watts: 426 Lumens/ft*1 (6W)	0-10V: 100% - 1% (10V-1%)	Outdoor (DAMP)		
	Black (BK)	3000K (3.0K)	4 Watts x 2 = 8 Watts: 568 Lumens/ft*1 (8W)	0-10V: 100% - 10% (10V-10%)			
		3500K (3.5K)	5 Watts x 2 = 10 Watts: 710 Lumens/ft*1 (10W)	Hi-Lume 1% 2 Wire*2 (2Wire)			
		4000K (4.0K)	6 Watts x 2 = 12 Watts: 852 Lumens/ft*1 (12W)	Hi-Lume 1% 3 Wire*3 (3Wire)			
		4500K (4.5K)	8 Watts x 2 = 16 Watts: 1136 Lumens/ft*1 (16W)	JA8 0-10V (JA8-10V)			
		5000K (5.0K)	12 Watts x 2 = 24 Watts: 1704 Lumens/ft*1 (24W)	JA8 2 Wire (JA8-2WR)			
		5700K (5.7K)		DMX-512**4 (DMX)			
		Red (R)		DALI*5 (DALI)			
		Green (G)					
		Blue (B)					
		Amber (A)					

*1 Lumens per foot based on 3.5K CCT LED.

Example: 71 Lumens x 8 Watts = 568 Lumens per Foot

*2 40 watt max Lutron Hi-Lume 1% 2 Wire (L3DA2W) #L3DA4U1UKL-CV240

*3 40 watt max Lutron Hi-Lume 1% 3 Wire (L3DA3W) #L3DA4U1UKL-CV240

*4 Default DMX address of each fixture is 001. Consult third party DMX commissioner to modify at time of installation

*5 DALI commissioning to be performed by a third party at time of installation.

CALI does not provide DALI commissioning

*6 Lutron drivers primary voltage 120V

*7 Remote drivers wattage sized based on length of run.

Example: 10' run x 6 watts per foot = 60 watts. Driver will be sized to 60 watts maximum.

CALIFORNIA ACCENT LIGHTING, INC.

2820 E. Gretta Lane, Anaheim, CA 92806

ph. 800.921.CALI (2254) | fx. 714.535.7902 | info@calilighting.com | calilighting.com

© CALI. All rights reserved. CALI reserves the right to make changes or withdraw specifications without prior notice.

alumLEDs™
Manufactured in the U.S.A.





CALIFORNIA
ACCENT
LIGHTING
INC

ALS500T-DBR-FG | INDIRECT LIGHTING

MOUNTING OPTIONS

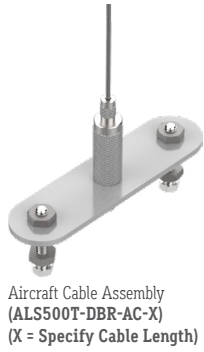
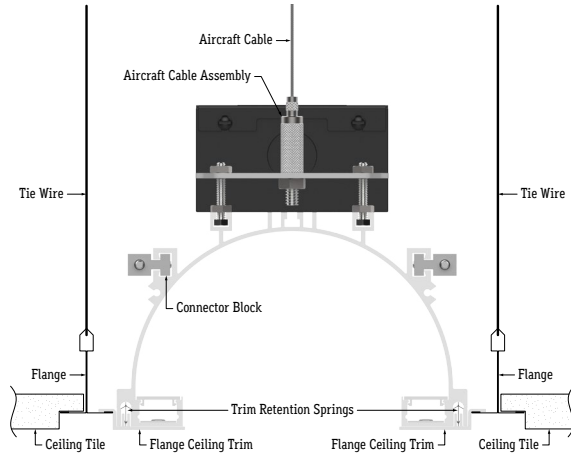
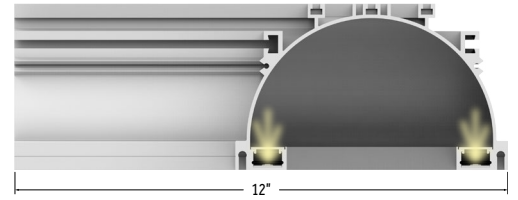
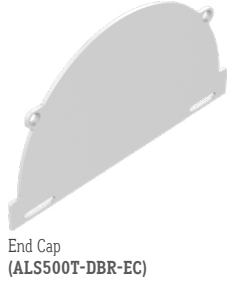


DIAGRAM OF ASSEMBLY (Aircraft Cable)



PART NUMBER	SPECIFY LENGTH	SPECIFY FINISH	SPECIFY QUANTITY	UNIT
ALS500T-DBR-EC	N/A			Each
ALS500T-DBR-90D	N/A			Each
ALS500T-DBR-AC-X		N/A		Each

ACCESSORIES (Sold Separately)



CALIFORNIA ACCENT LIGHTING, INC.

2820 E. Gretta Lane, Anaheim, CA 92806

ph. 800.921.CALI (2254) | fx. 714.535.7902 | info@calilighting.com | calilighting.com

© CALI. All rights reserved. CALI reserves the right to make changes or withdraw specifications without prior notice.

alumLEDs™
Manufactured in the U.S.A.

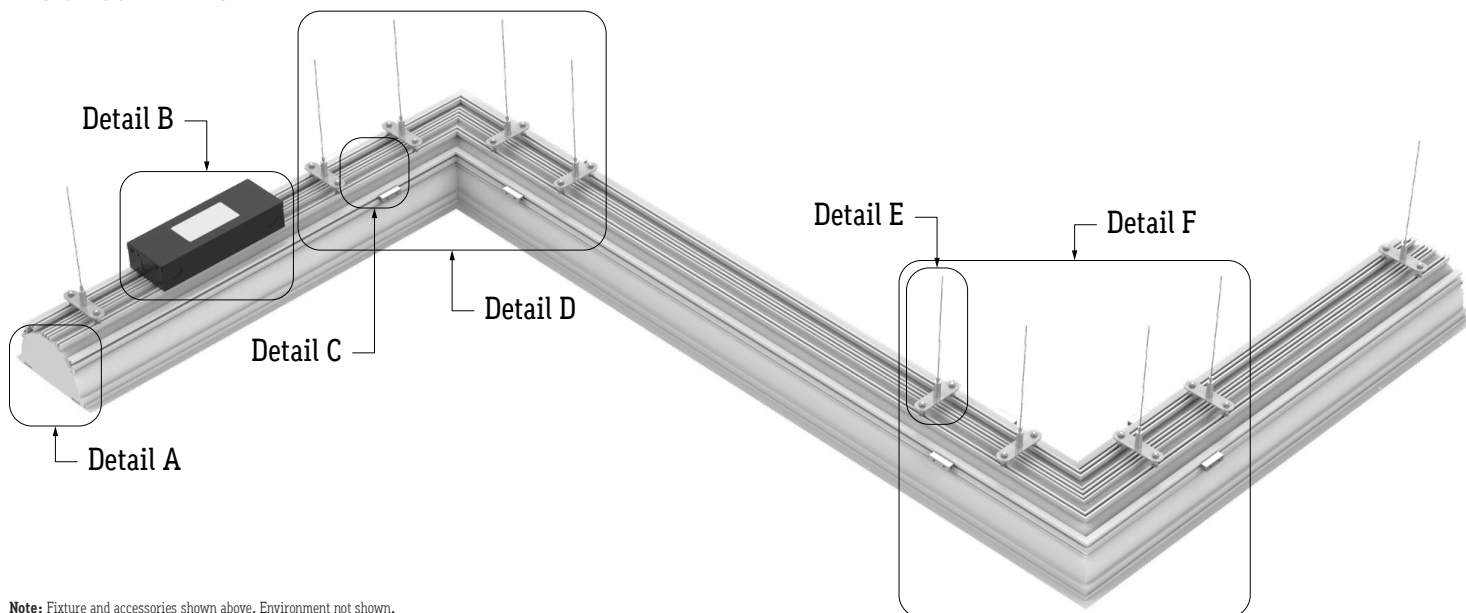




CALIFORNIA
ACCENT
LIGHTING
INC

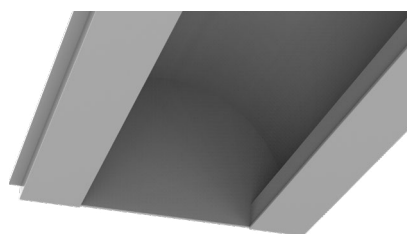
ALS500T-DBR-FG | INDIRECT LIGHTING

DESIGN GUIDELINES

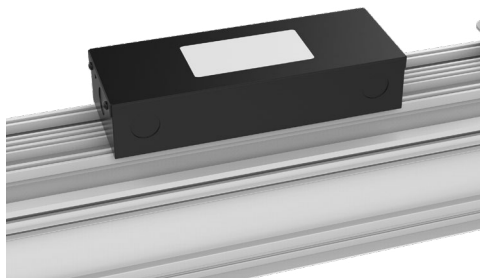


Note: Fixture and accessories shown above. Environment not shown.

DETAILS



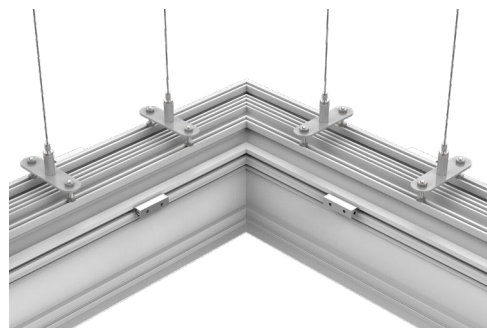
Detail A
End Cap
(ALS500T-DBR-EC)



Detail B
Driver Assembly
Note: Appearance may vary



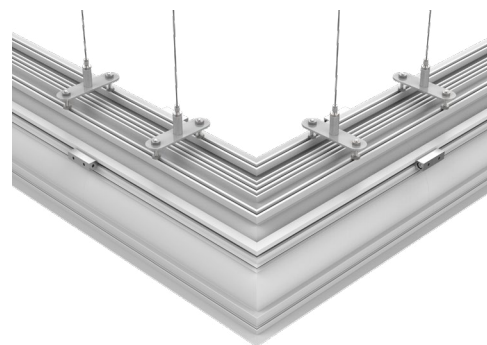
Detail C
Continuous Connection



Detail D
Interior Corner
(ALS500T-DBR-90D)



Detail E
Aircraft Cable Assembly
(ALS500T-DBR-AC-X)
(X = Specify Length)



Detail F
Exterior Corner
(ALS500T-DBR-90D)

CALIFORNIA ACCENT LIGHTING, INC.

2820 E. Gretta Lane, Anaheim, CA 92806

ph. 800.921.CALI (2254) | fx. 714.535.7902 | info@calilighting.com | calilighting.com

© CALI. All rights reserved. CALI reserves the right to make changes or withdraw specifications without prior notice.

alumLEDs™
Manufactured in the U.S.A.

