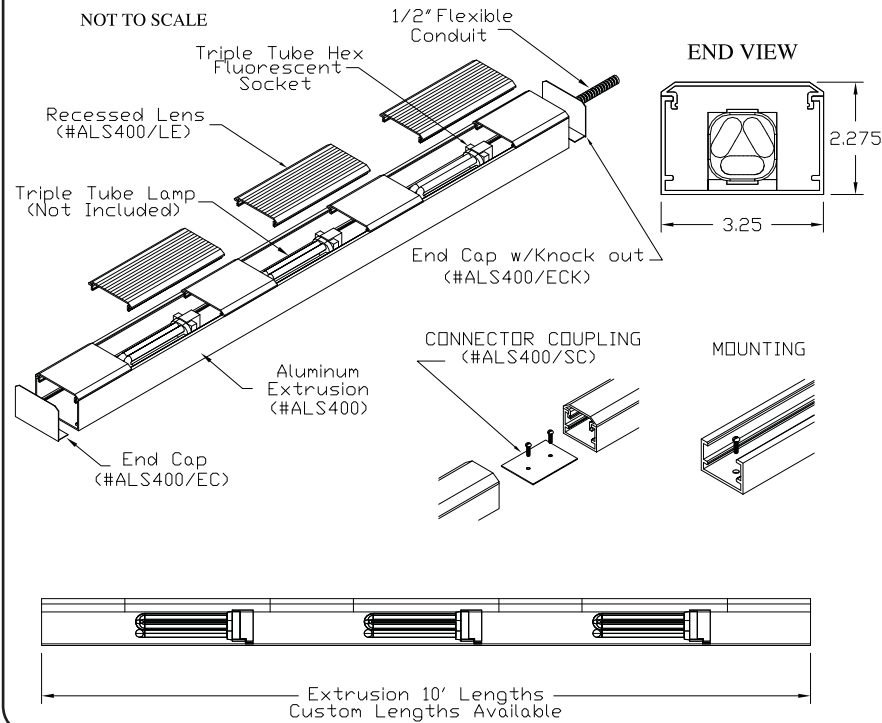


Drawing # ALS400H-RL

Manufactured in U.S.A.



<b>Fixture Type</b>	
---------------------	--

### Product Features

- Applications:** Cove, Indirect Lighting
- Mounting:** Recessed with Lens  
Straight Runs
- Voltage:** 120V/277
- Lamp Type:** Triple Tube Fluorescent  
(Lamps Not Included)
- Socket Type:** GX24D, GX24Q
- Length:** Built to Order
- Construction:** Aluminum Extrusion
- Light Output:** Refer to IES Files
- Ballast:** Integral Ballast
- Listing:** Dry and Damp Location  
Meets UL1598

### Lamp Specifications

Lamp #	Watts	Socket	Pins	Standard Spacing
TT18	18	GX24D-2	2 Pin	8" O/C
TT26	26	GX24D-3	2 Pin	9" O/C
TT13-1	13	GX24Q-1	4 Pin	6" O/C
TT18-2	18	GX24Q-2	4 Pin	8" O/C
TT26-3	26	GX24Q-3	4 Pin	7" O/C
TT32-3	32	GX24Q-3	4 Pin	7" O/C
TT42-4	42	GX24Q-4	4 Pin	8" O/C

#### Applications

Designed for indoor use, AlumLite is ideal for many applications including the amusement, recreation, and architectural industries. AlumLite is excellent for cove lighting, undercabinet lighting, accent lighting, and many more applications.

AlumLite is used in:

- Restaurants
- Casinos
- Retail Stores/Shopping Malls
- Hotels
- Homes and many more

### How to Order or Specify

#### Product Code: (Fill in the Blanks)

ALS400H-RL / \_\_\_\_\_ / \_\_\_\_\_ / SP / \_\_\_\_\_ / \_\_\_\_\_

Ex.: ALS400H-RL	TT18	WH	SP	120V	
Series	Lamp	Finish	SP	Voltage	Reflectors
ALS400H-RL	TT18	Natural Aluminum (NA)	Straight Pieces	120V	RE1
	TT26	Satin (SA)	(SP)	277V	RE2
	TT13-1	White (WH)		Specify for other Voltages	RE3
	TT18-2	Anodized Black (AB)			RE4
	TT26-3	Anodized Chrome (AC)			Leave Blank if
	TT32-3	Powder Coat (PC)			No Reflector is
	TT42-4				Required

#### Electrical

AlumLite Hex Compact Fluorescent Series is supplied with an integral 120V or 277V ballast. Consult factory for other voltages. For dimming ballasts add a DM after the lamp. Ex. 18W/DM. Dimming only for 4 Pin Lamps.

#### Lamps

Triple Tube Performance Compact Fluorescent Lamps are not included with the fixture.

#### Material

Aluminum Extrusion available in natural aluminum, anodized, or powder coat.

Date:		Specifier:		Project:	
-------	--	------------	--	----------	--



2034 E. Lincoln Ave. # 431 • Anaheim, CA 92806  
 TF: 800.921.CALI (2254) • PH: 714-535-7900 • FX: 714.535.7902  
 Web site: www.calilighting.com • E-mail: info@calilighting.com

